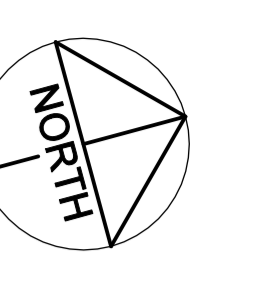
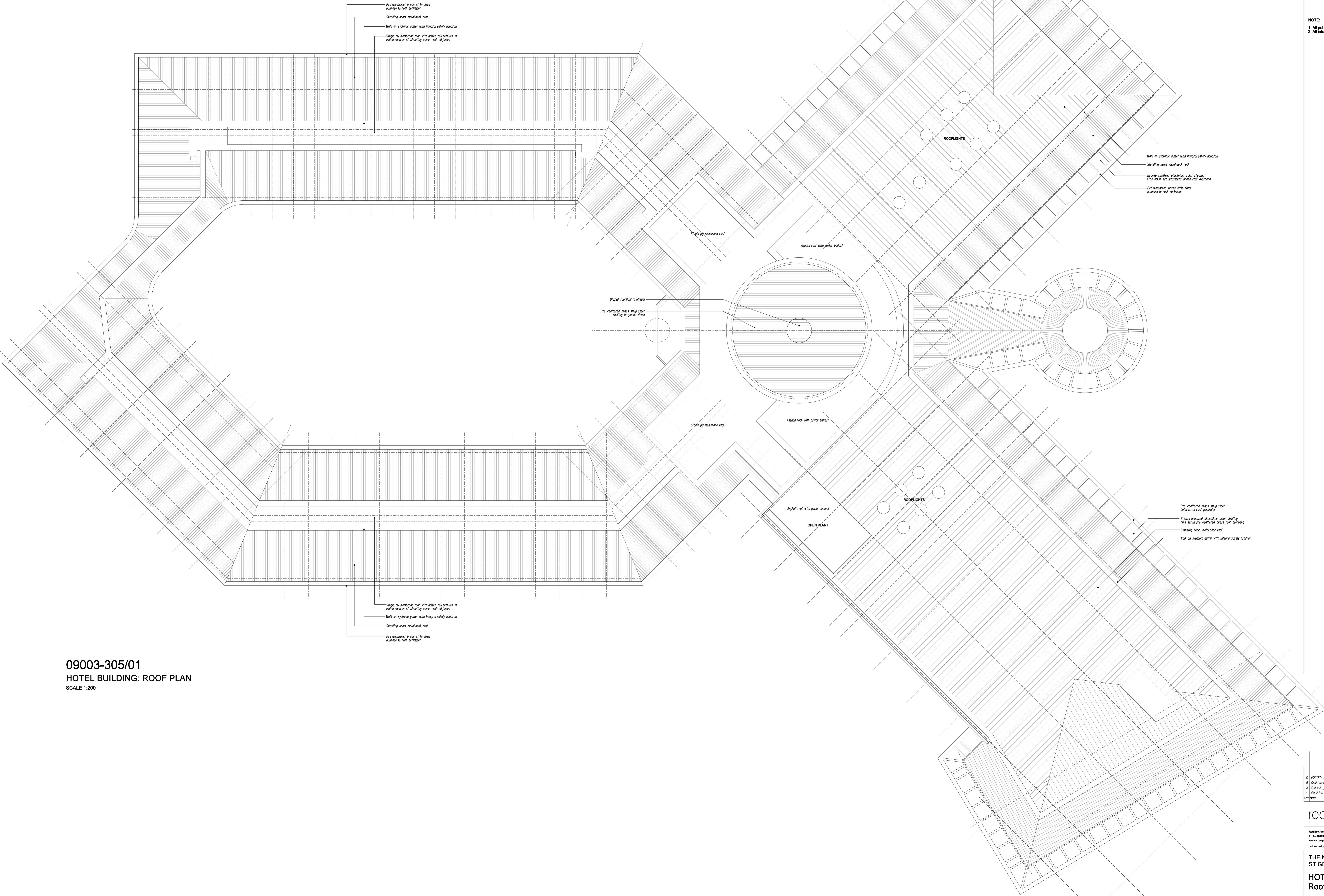


NOTES
 1. To be read with CDM Risk Register
 2. Do not scale, check this to the latest version, if in doubt, ask your drawing issuing log for issue history



NOTE:
 1. All public realm/landscaping shown for indicative purposes only.
 2. All internal layouts shown for indicative purposes only.



09003-305/01
 HOTEL BUILDING: ROOF PLAN
 SCALE 1:200

REV	DATE	BY	CHKD	DESCRIPTION
C	2020/02/27	MC	SG	ISSUED FOR PLANNING
B	2020/02/26	MC	SG	Final Issue for Customers
A	2020/02/22	DY	BF	General Update
-	2020/02/18	DY	BF	Final Issue
0				Issue

redboxarchitecture
 Red Box Architecture, 20 Hoxton Chase, Newcastle upon Tyne, NE1 3BU
 T: +44 (0)191 245 1766, F: +44 (0)191 245 1771, redboxarchitecture.com, www.redboxdesign.co.uk
 Red Box Design Group Ltd trading as Red Box Architecture
 redboxdesigngroup - redboxinteriors - redboxgarden

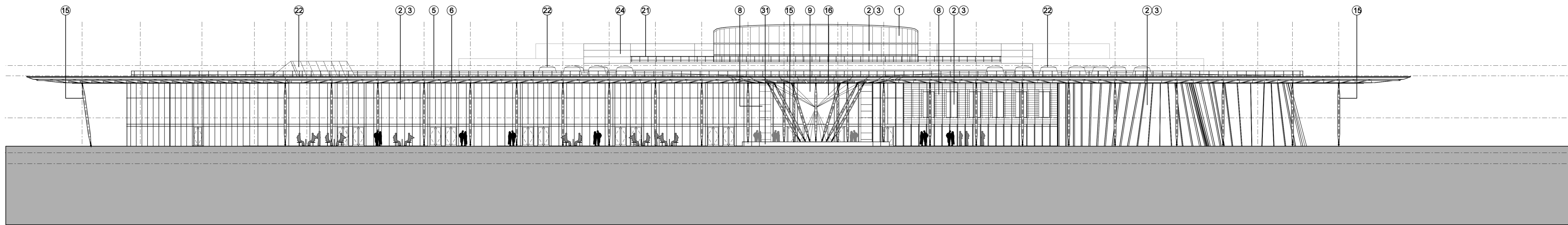
THE NATIONAL FOOTBALL CENTRE ST GEORGE'S PARK			
HOTEL BUILDING Roof GA Plan			
1:200	09 003	305	C
AD	PLANNING		

copyright © Red Box Design Group Ltd 2019

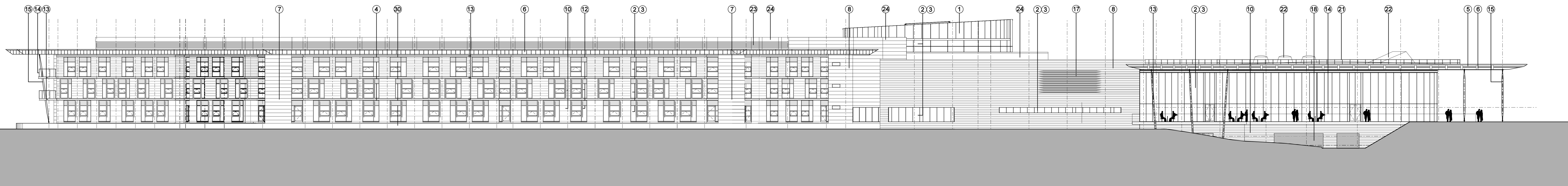
NOTES
 1. To be read with CDM Risk Register
 2. Do not scale, check this in the latest version, if in doubt, ask our drawing issuing log for issue history

MATERIALS LEGEND

- ① Pre-patinated copper cladding
- ② PPC curtain walling
- ③ Sealed double glazed units
- ④ Sealed double glazed insulated spandrel panels
- ⑤ Bronze anodised aluminium louvre blades
- ⑥ Pre-weathered brass cassette panels to soffits and fascias
- ⑦ Pre-weathered brass strip cladding
- ⑧ Pre-weathered brass plank cladding
- ⑨ Structural glazing (double glazed)
- ⑩ Stone cladding
- ⑪ Oak strip boarding cladding
- ⑫ Oak solar shading fins
- ⑬ ppc channel
- ⑭ Laminated glass balustrade
- ⑮ Glulam column with engineered steel head and base connection details
- ⑯ Stainless steel bracing to porte cochere
- ⑰ Bronze screen to plant louvres
- ⑱ Roller shutter doors
- ⑲ ppc steel doorset
- ⑳ Standing seam metal deck roofing
- ㉑ Handrail: ppc 12 x50 flats
- ㉒ Pre-patinated copper rooflight surround
- ㉓ ppc louvres
- ㉔ ppc rainscreen cassette cladding
- ㉕ Kalwall cladding panels in ppc support framework
- ㉖ Painted steel columns in ppc support framework and base details
- ㉗ Opaque double glazed units
- ㉘ Timber louvres
- ㉙ Tensile opaque fabric roof covering
- ㉚ Gabion walling
- ㉛ Dressed stone walling



09003-350/01
 HOTEL BUILDING: NORTH ELEVATION
 SCALE 1:200



09003-350/02
 HOTEL BUILDING: EAST ELEVATION
 SCALE 1:200

B	ISSUED FOR PLANNING	2000/02/22	MC	SG
A	Draft Issue For Comments	2000/02/29	MC	SG
	Final Issue	2000/02/22	DY	BP
	Rev	Date	By	Reason

redboxarchitecture
 Red Box Architecture, 25 Nonsuch Close, Nonsuch, open Type, NE1 1SU
 t: +44 (0)191 245 716, f: +44 (0)191 245 711, red@redboxdesign.com, www.redboxdesign.com
 Red Box Design Group Ltd trading as Red Box Architecture
 redboxdesigngroup | redboxinteriors | redboxgallery

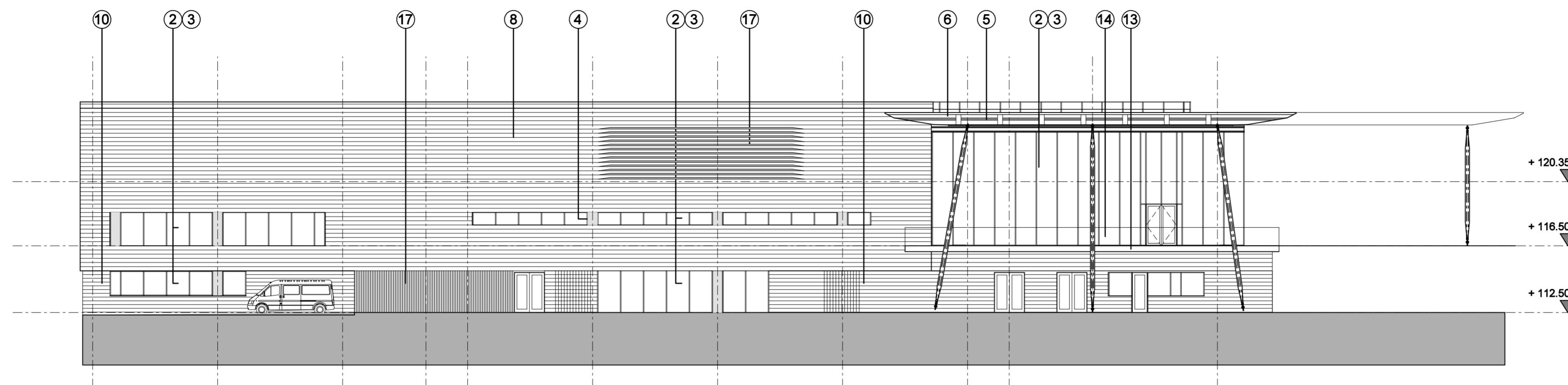
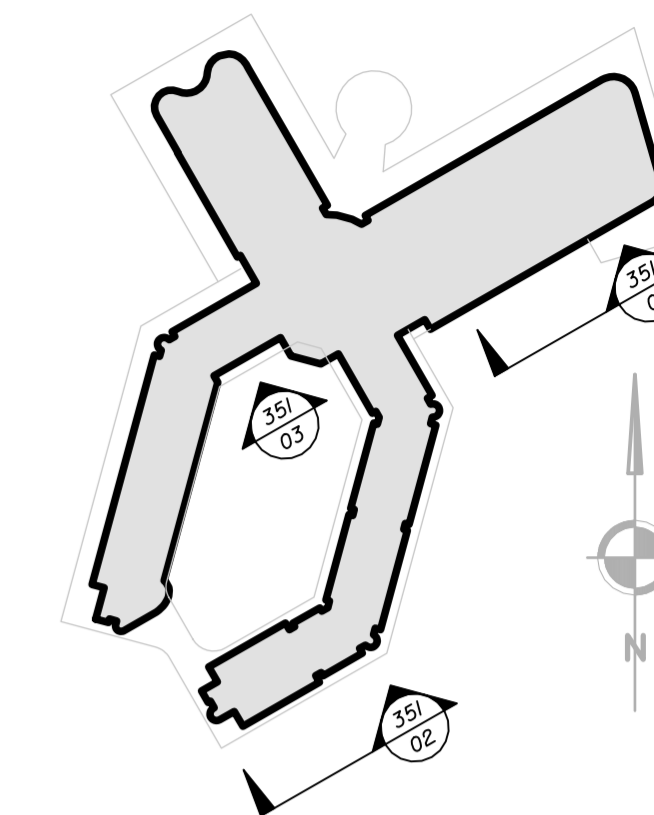
THE NATIONAL FOOTBALL CENTRE
 ST GEORGE'S PARK
 HOTEL BUILDING
 North & East Elevation

1:200	09 003	350	B
AD	PLANNING		

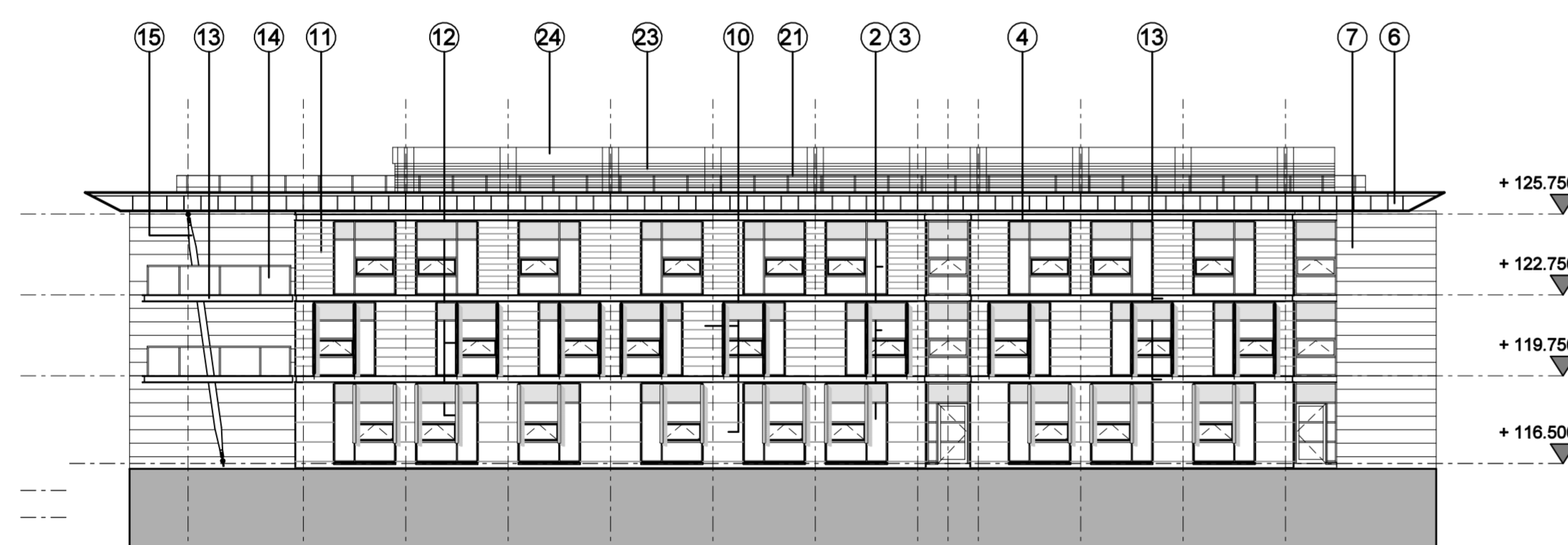
copyright © Red Box Design Group Ltd 2019

Notes
 1. To be read with CDM Risk Register
 2. Do not scale, check this is the latest version, if in doubt, ask see drawing issue log for issue history

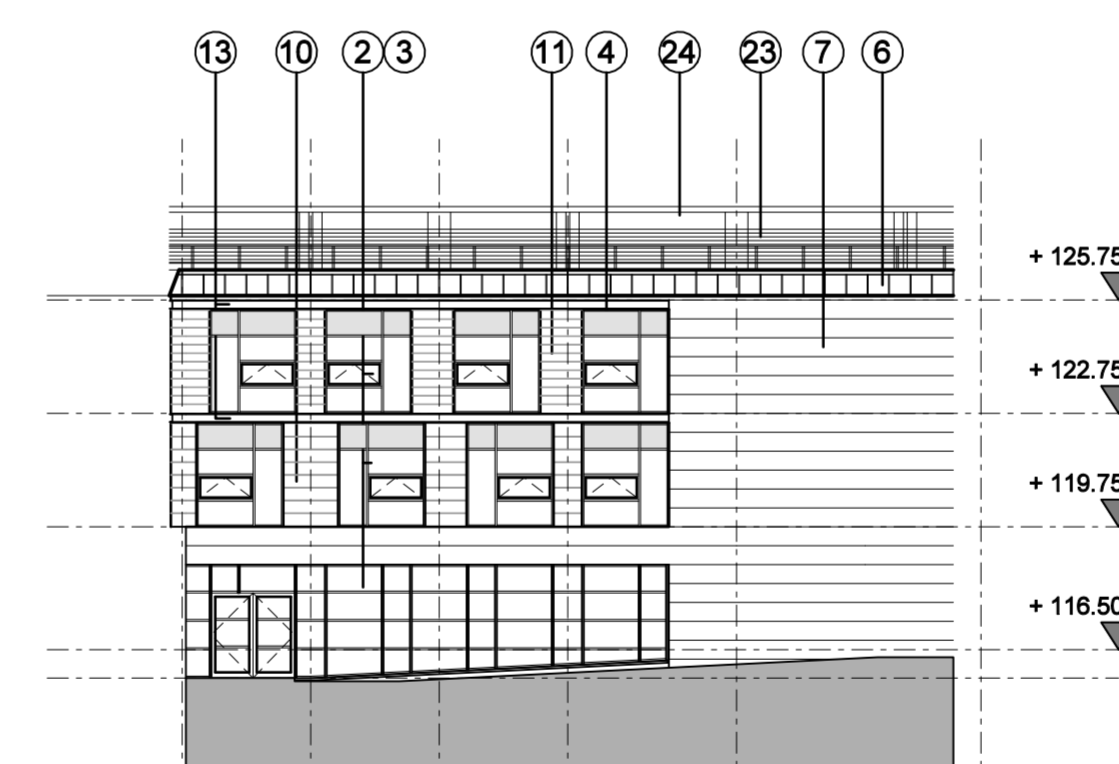
09003-351/04
 Hotel Elevation Location Plan
 Scale: NTS



09003-351/01
 HOTEL BUILDING: SOUTH EAST ELEVATION TO CONFERENCE WING
 SCALE 1:200



09003-351/02
 HOTEL BUILDING: SOUTH EAST ELEVATION TO BEDROOM WING
 SCALE 1:200



09003-351/03
 HOTEL BUILDING: SOUTH EAST ELEVATION TO BEDROOM WING FACING COURTYARD
 SCALE 1:200

MATERIALS LEGEND	
①	Pre patinated copper cladding
②	PPC curtain walling
③	Sealed double glazed units
④	Sealed double glazed insulated spandrel panels
⑤	Bronze anodised aluminium louvre blades
⑥	Pre weathered brass cassette panels to soffits and fascias
⑦	Pre weathered brass strip cladding
⑧	Pre weathered brass plank cladding
⑨	Structural glazing (double glazed)
⑩	Stone cladding
⑪	Oak strip boarding cladding
⑫	Oak solar shading fins
⑬	ppc channel
⑭	Laminated glass balustrade
⑮	Glulam column with engineered steel head and base connection details
⑯	Stainless steel bracing to porte cochere
⑰	Bronze screen to plant louvres
⑱	Roller shutter doors
⑲	ppc steel doorset
⑳	Standing seam metal deck roofing
㉑	Handrail: ppc 12 x50 flats
㉒	Prepatinated copper rooflight surround
㉓	ppc louvres
㉔	ppc rainscreen cassette cladding
㉕	Kalwall cladding panels in ppc support framework
㉖	Painted steel columns with engineered head and base details
㉗	Opaque double glazed units
㉘	Timber louvres
㉙	Tensile opaque fabric roof covering
㉚	Gablon walling
㉛	Dressed stone walling

Rev	Notes	Date	By	Review
B	ISSUED FOR PLANNING	2010.02.02	MC	SG
A	Draft Issue For Comments	2009.01.29	MC	SG
	First Issue	2009.12.22	DW	BF

redboxarchitecture

Red Box Architecture, St Nicholas Church, Newcastle upon Tyne, NE1 1RJ
 T: +44 (0)191 245 7100, F: +44 (0)191 240 7111, mail@redboxdesign.com, www.redboxdesign.com
 Red Box Design Group Ltd trading as Red Box Architecture
 redboxdesigngroup : redboxinteriors : redboxgallery

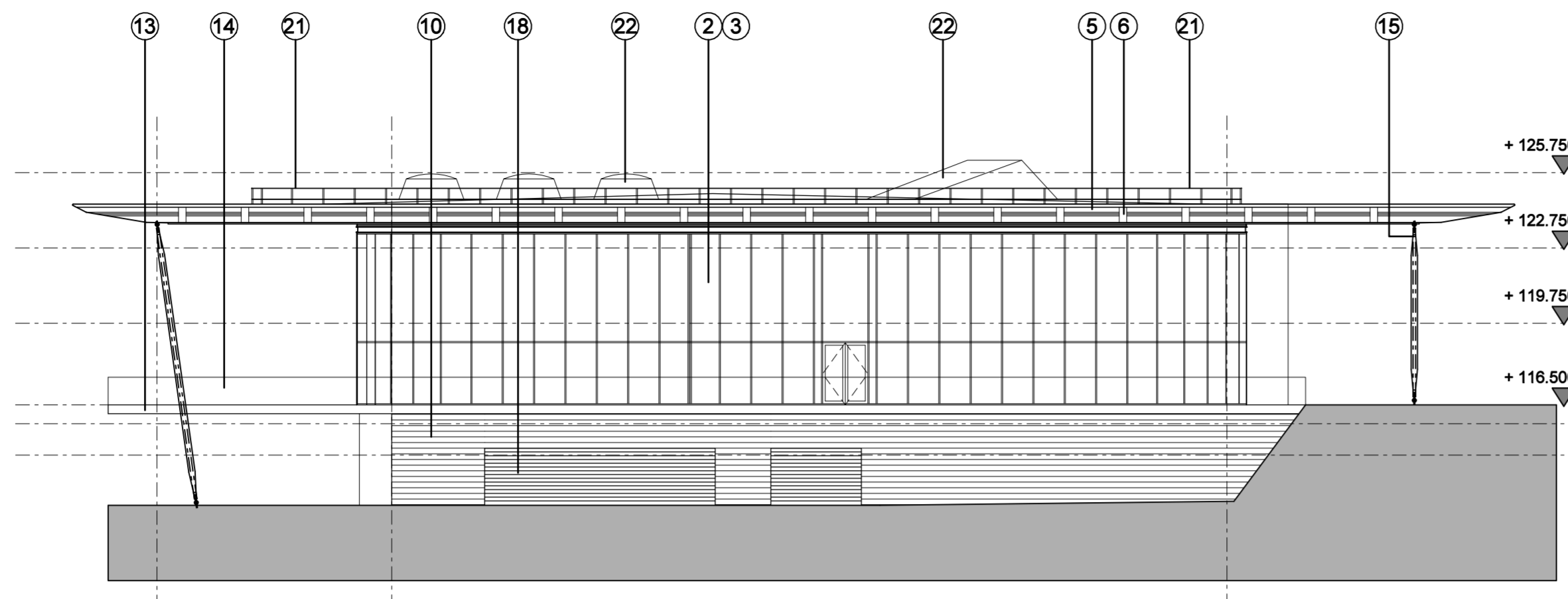
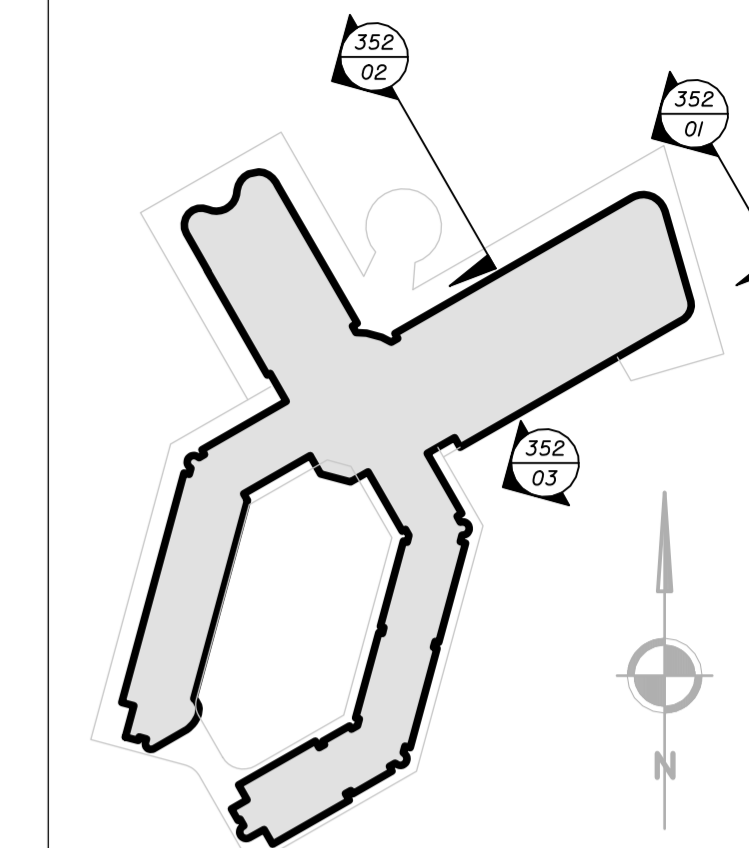
THE NATIONAL FOOTBALL CENTRE
 ST GEORGE'S PARK

HOTEL BUILDING
 South East Elevations

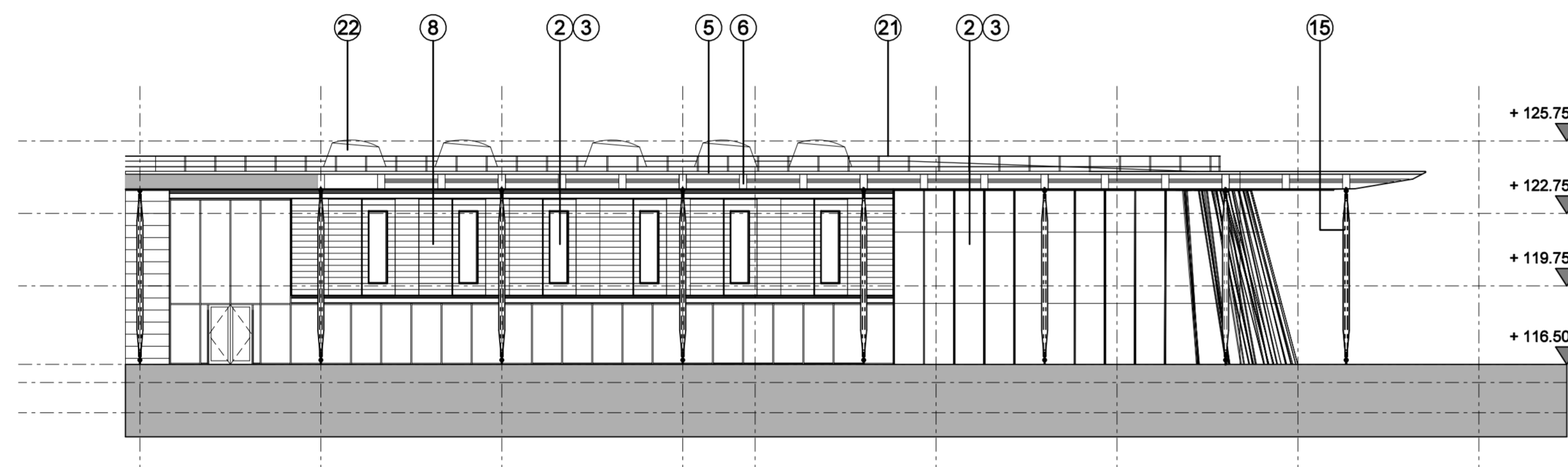
1:200	09 003	351	B
A1	PLANNING		

Notes
 1. To be read with CDM Risk Register
 2. Do not scale, check this is the latest version, if in doubt, ask see drawing issue log for issue history

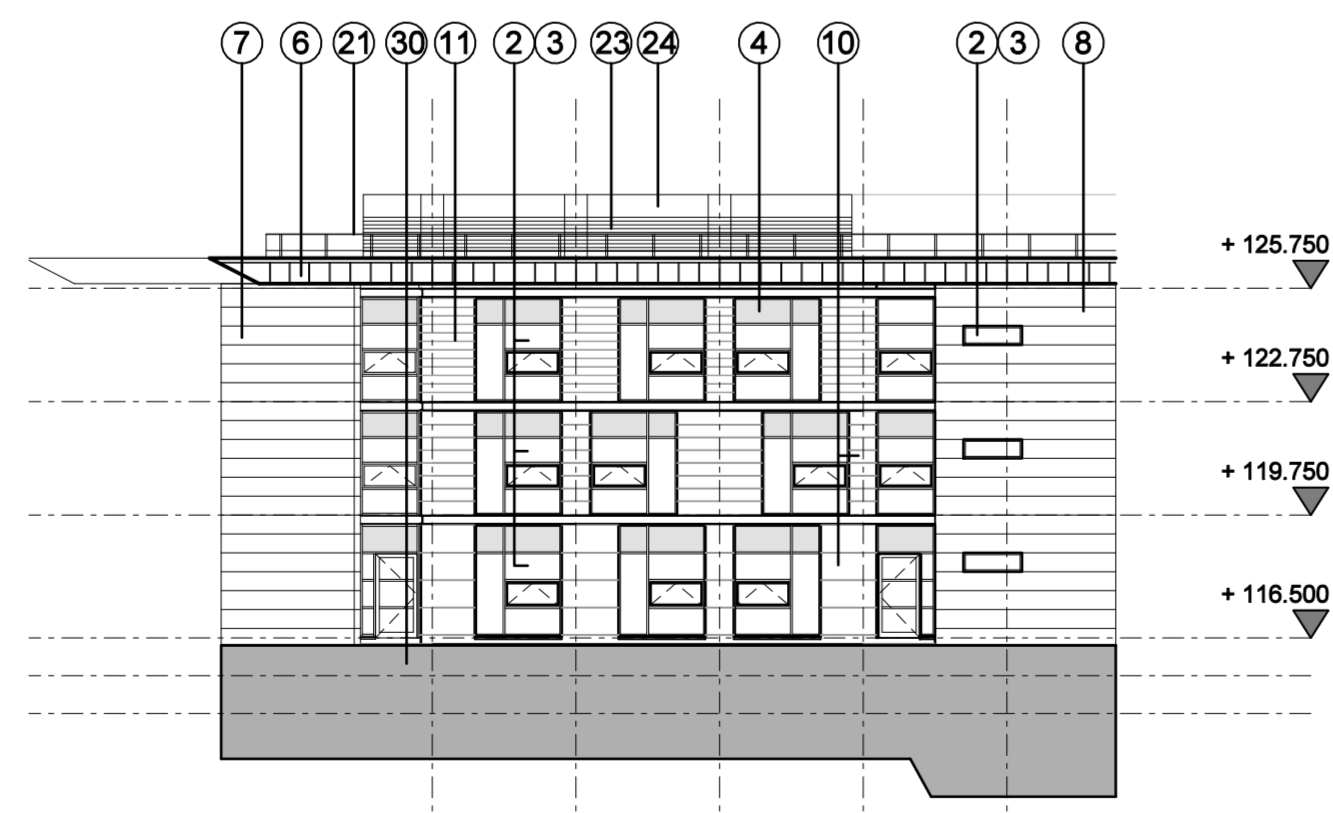
09003-352/04
 Hotel Elevation Location Plan
 Scale: NTS



09003-352/01
 HOTEL BUILDING: PROPOSED NORTH EAST ELEVATION: CONFERENCE CENTRE WING
 SCALE 1:200



09003-352/02
 HOTEL BUILDING: PROPOSED NORTH EAST ELEVATION: LEISURE WING
 SCALE 1:200



09003-352/03
 HOTEL BUILDING: PROPOSED NORTH EAST ELEVATION: LEISURE WING
 SCALE 1:200

MATERIALS LEGEND

- ① Pre patinated copper cladding
- ② PPC curtain walling
- ③ Sealed double glazed units
- ④ Sealed double glazed insulated spandrel panels
- ⑤ Bronze anodised aluminium louvre blades
- ⑥ Pre weathered brass cassette panels to soffits and fascias
- ⑦ Pre weathered brass strip cladding
- ⑧ Pre weathered brass plank cladding
- ⑨ Structural glazing (double glazed)
- ⑩ Stone cladding
- ⑪ Oak strip boarding cladding
- ⑫ Oak solar shading fins
- ⑬ ppc channel
- ⑭ Laminated glass balustrade
- ⑮ Glulam column with engineered steel head and base connection details
- ⑯ Stainless steel bracing to porte cochere
- ⑰ Bronze screen to plant louvres
- ⑱ Roller shutter doors
- ⑲ ppc steel doorset
- ⑳ Standing seam metal deck roofing
- ㉑ Handrail: ppc 12 x50 flats
- ㉒ Prepatinated copper rooflight surround
- ㉓ ppc louvres
- ㉔ ppc rainscreen cassette cladding
- ㉕ Kalfwall cladding panels in ppc support framework
- ㉖ Painted steel columns with engineered head and base details
- ㉗ Opaque double glazed units
- ㉘ Timber louvres
- ㉙ Terracotta opaque fabric roof covering
- ㉚ Gabion walling
- ㉛ Dressed stone walling

Rev	Notes	Date	By	Review
B	ISSUED FOR PLANNING	2010.02.12	MC	SG
A	Draft Issue For Comments	2009.01.29	MC	SG
-	First Issue	2009.12.22	DW	BF

redboxarchitecture

Red Box Architecture, St Nicholas Chare, Newcastle upon Tyne, NE1 1RJ
 T: +44 (0)191 245 7100, F: +44 (0)191 240 7111, mail@redboxdesign.com, www.redboxdesign.com
 Red Box Design Group Ltd trading as Red Box Architecture
 redboxdesigngroup : redboxinteriors : redboxgallery

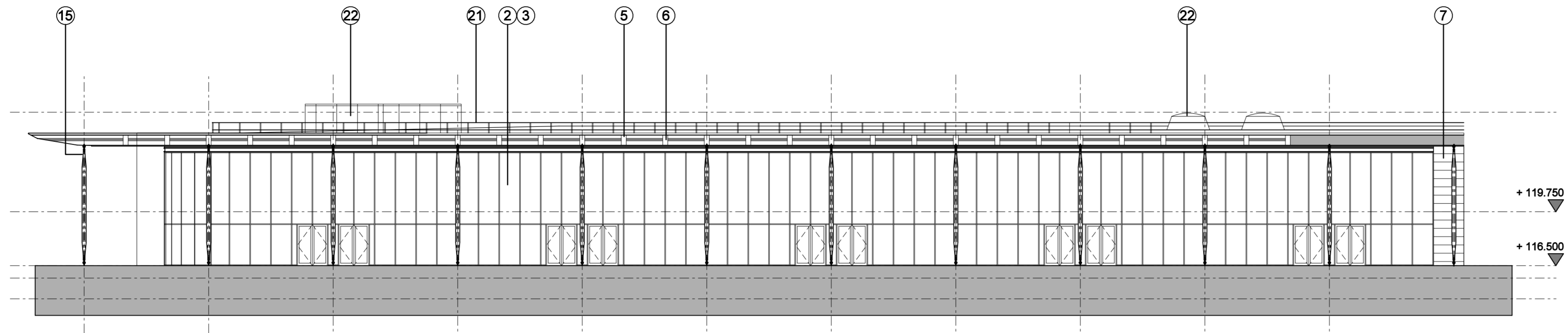
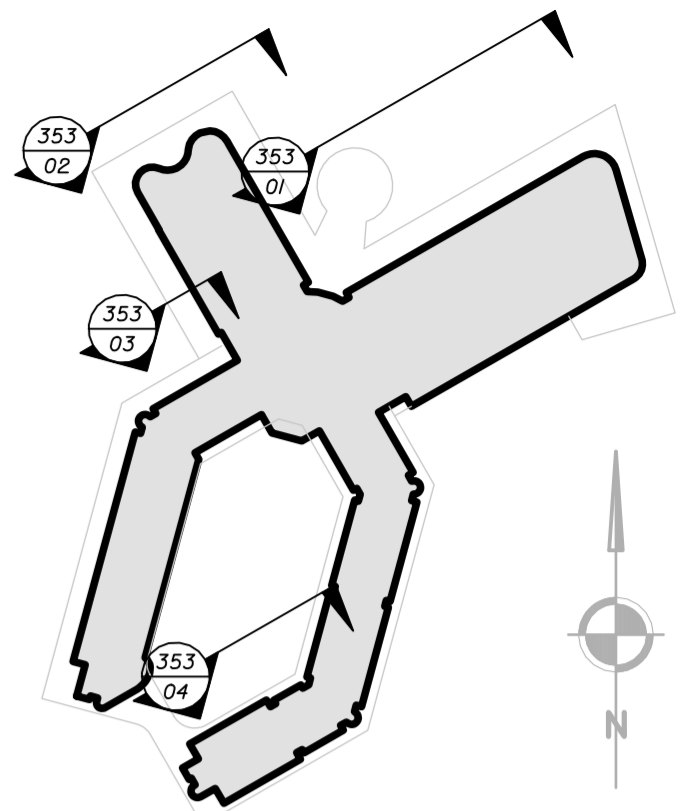
THE NATIONAL FOOTBALL CENTRE
 ST GEORGE'S PARK

HOTEL BUILDING
 Proposed North East Elevations

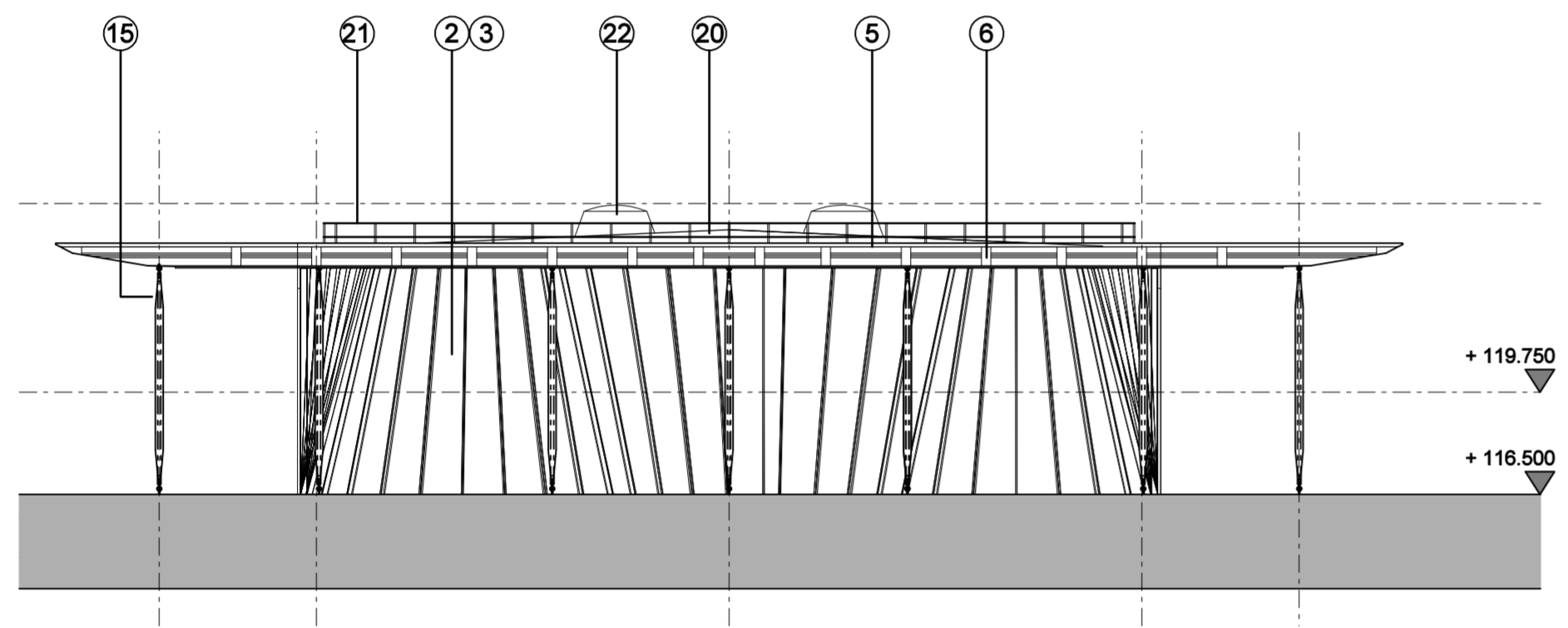
1:200	09 003	352	B
A1	PLANNING		

Notes
 1. To be read with CDM Risk Register
 2. Do not scale, check this is the latest version, if in doubt, ask see drawing issue log for issue history

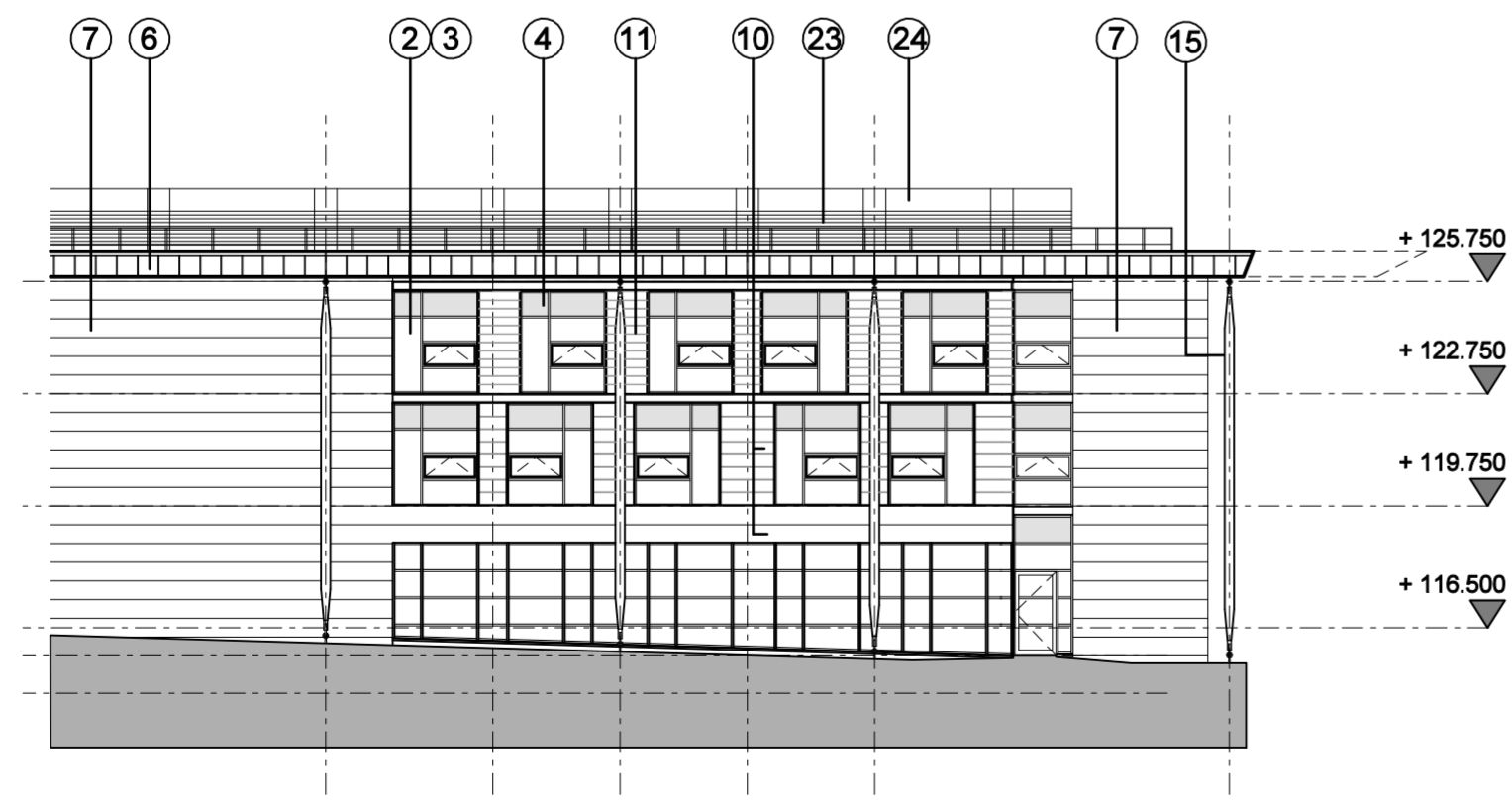
09003-353/05
 Hotel Elevation Location Plan
 Scale: N.T.S



09003-353/01
 HOTEL BUILDING: PROPOSED NORTH WEST ELEVATION: CONFERENCE CENTRE WING
 SCALE 1:200



09003-353/02
 HOTEL BUILDING: PROPOSED NORTH WEST ELEVATION: LEISURE WING
 SCALE 1:200



09003-353/03
 HOTEL BUILDING: PROPOSED NORTH WEST ELEVATION: BEDROOM WING
 SCALE 1:200



09003-353/04
 HOTEL BUILDING: PROPOSED NORTH WEST ELEVATION: BEDROOM WING FACING COURTYARD
 SCALE 1:200

MATERIALS LEGEND

- ① Pre patinated copper cladding
- ② PPC curtain walling
- ③ Sealed double glazed units
- ④ Sealed double glazed insulated spandrel panels
- ⑤ Bronze anodised aluminium louvre blades
- ⑥ Pre weathered brass cassette panels to soffits and fascias
- ⑦ Pre weathered brass strip cladding
- ⑧ Pre weathered brass plank cladding
- ⑨ Structural glazing (double glazed)
- ⑩ Stone cladding
- ⑪ Oak strip boarding cladding
- ⑫ Oak strip shading fins
- ⑬ ppc channel
- ⑭ Laminated glass balustrade
- ⑮ Glulam column with engineered steel head and base connection details
- ⑯ Stainless steel bracing to porte cochere
- ⑰ Bronze screen to plant louvres
- ⑱ Roller shutter doors
- ⑲ ppc steel doorset
- ⑳ Standing seam metal deck roofing
- ㉑ Handrail: ppc 12 x50 flats
- ㉒ Prepatinated copper rooflight surround
- ㉓ ppc louvres
- ㉔ ppc rainscreen cassette cladding
- ㉕ Kalfwall cladding panels in ppc support framework
- ㉖ Painted steel columns with engineered head and base details
- ㉗ Opaque double glazed units
- ㉘ Timber louvres
- ㉙ Terracotta opaque fabric roof covering
- ㉚ Gabion walling
- ㉛ Dressed stone walling

Rev	Notes	Date	By	Review
B	ISSUED FOR PLANNING	2010.02.12	MC	SG
A	Draft Issue For Comments	2009.01.29	MC	SG
-	First Issue	2009.12.22	DW	BF

redboxarchitecture

Red Box Architecture, St Nicholas Chare, Newcastle upon Tyne, NE1 1RJ
 T: +44 (0)191 245 7100, F: +44 (0)191 245 7111, mail@redboxdesign.com, www.redboxdesign.com
 Red Box Design Group Ltd trading as Red Box Architecture
 redboxdesigngroup : redboxinteriors : redboxgallery

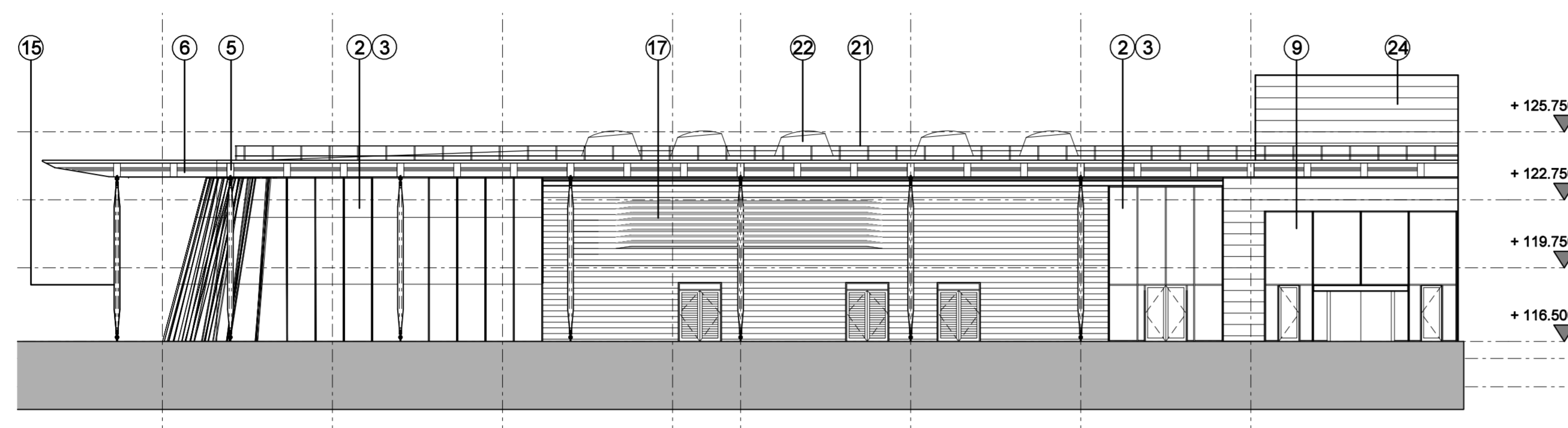
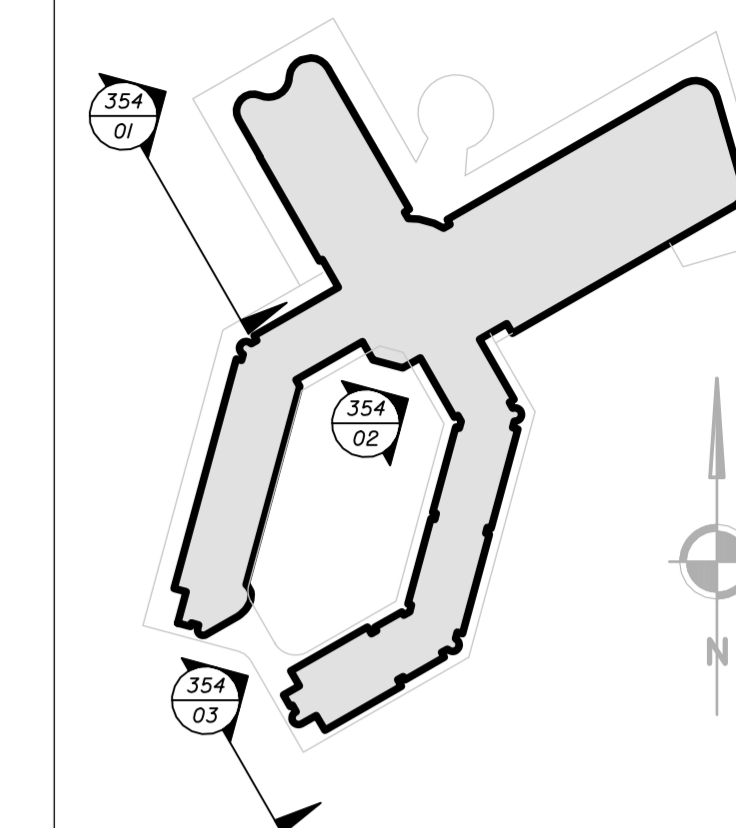
THE NATIONAL FOOTBALL CENTRE
 ST GEORGE'S PARK

HOTEL BUILDING
 Proposed North West Elevations

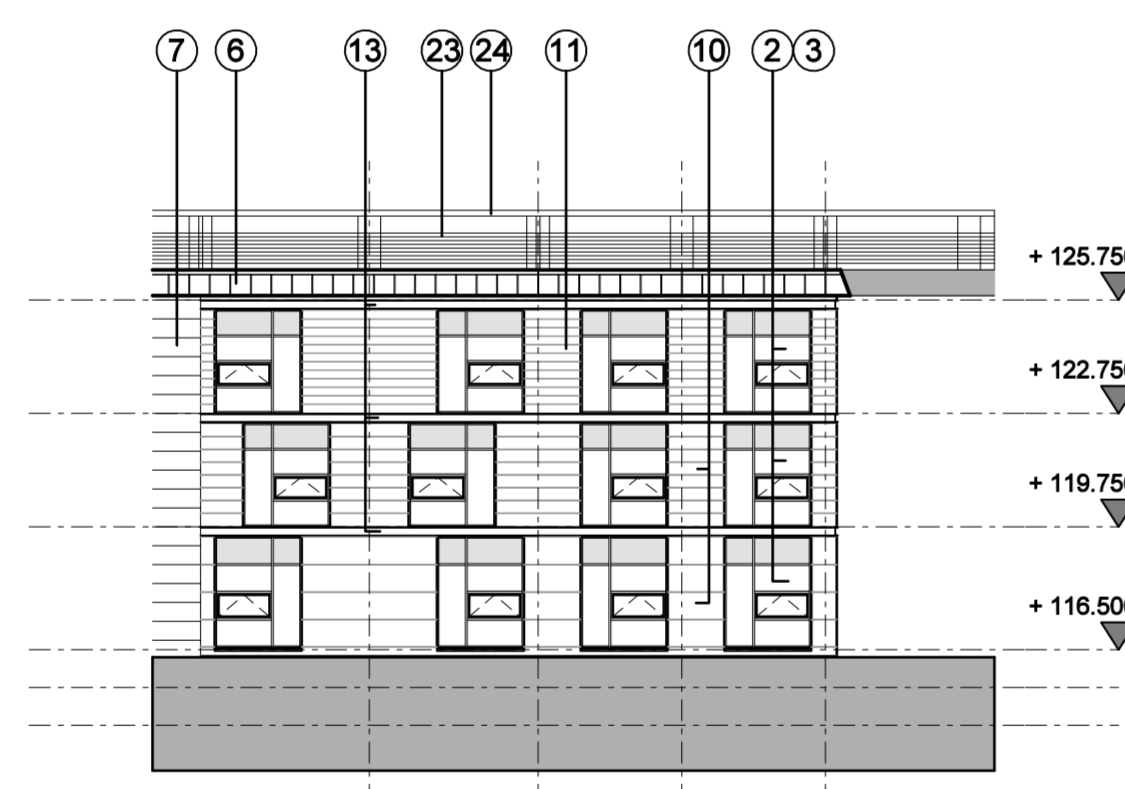
1:200	09 003	353	B
A1	PLANNING		

Notes
 1. To be read with CDM Risk Register
 2. Do not scale, check this is the latest version, if in doubt, ask see drawing issue log for issue history

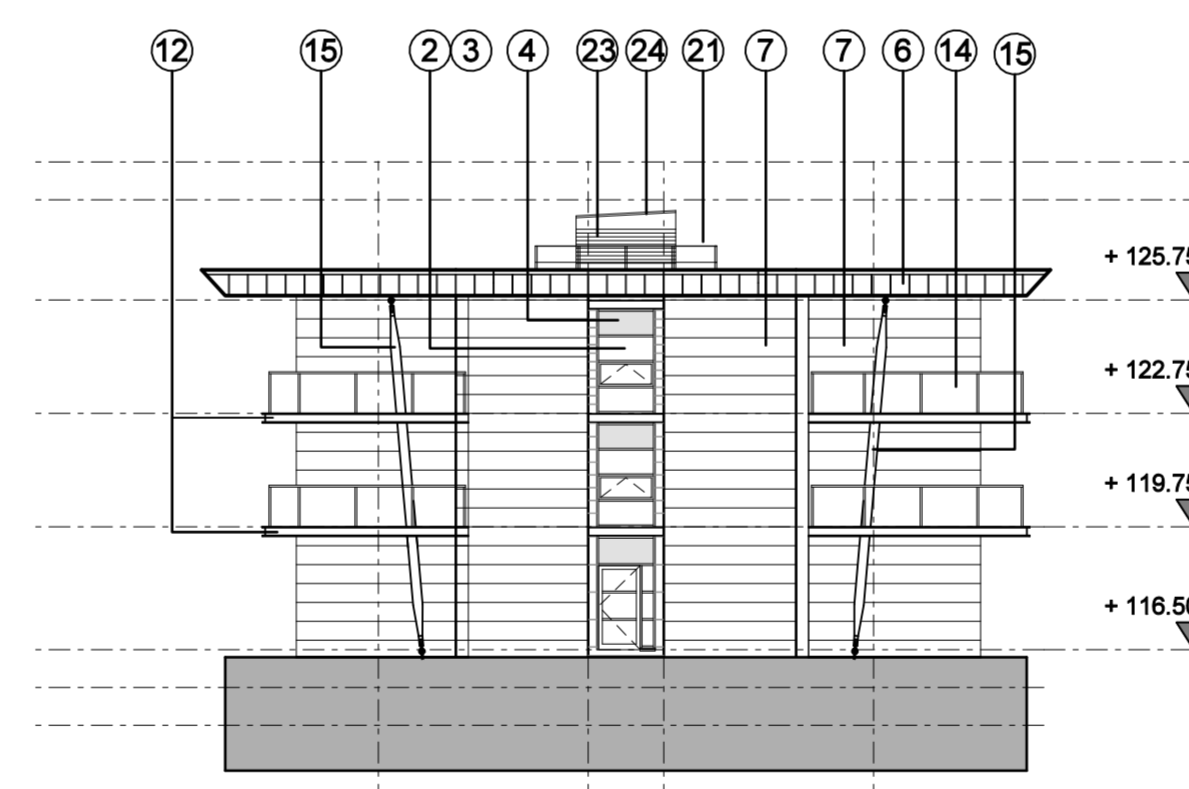
09003-354/04
 Hotel Elevation Location Plan
 Scale: N.T.S



09003-354/01
 HOTEL BUILDING: PROPOSED SOUTH WEST ELEVATION: LEISURE WING
 SCALE 1:200



09003-354/02
 HOTEL BUILDING: PROPOSED SOUTH WEST ELEVATION TO COURTYARD
 SCALE 1:200



09003-354/03
 HOTEL BUILDING: PROPOSED SOUTH WEST ELEVATION FACING SPORTS BUILDINGS
 SCALE 1:200

MATERIALS LEGEND	
①	Pre patinated copper cladding
②	PPC curtain walling
③	Sealed double glazed units
④	Sealed double glazed insulated spandrel panels
⑤	Bronze anodised aluminium louvre blades
⑥	Pre weathered brass cassette panels to soffits and fascias
⑦	Pre weathered brass strip cladding
⑧	Pre weathered brass plank cladding
⑨	Structural glazing (double glazed)
⑩	Stone cladding
⑪	Oak strip boarding cladding
⑫	Oak solar shading fins
⑬	ppc channel
⑭	Laminated glass balustrade
⑮	Glulam column with engineered steel head and base connection details
⑯	Stainless steel bracing to porte cochere
⑰	Bronze screen to plant louvres
⑱	Roller shutter doors
⑲	ppc steel doorset
⑳	Standing seam metal deck roofing
㉑	Handrail: ppc 12 x50 flats
㉒	Prepatinated copper rooflight surround
㉓	ppc louvres
㉔	ppc rainscreen cassette cladding
㉕	Kalwall cladding panels in ppc support framework
㉖	Painted steel columns with engineered head and base details
㉗	Opaque double glazed units
㉘	Timber louvres
㉙	Tenale opaque fabric roof covering
㉚	Gablon walling
㉛	Dressed stone walling

Rev	Notes	Date	By	Review
B	ISSUED FOR PLANNING	2010/02/12	MC	SG
A	Draft Issue For Comments	2009/01/29	MC	SG
-	First Issue	2009/12/22	DW	BF

redboxarchitecture

Red Box Architecture, St Nicholas Chare, Newcastle upon Tyne, NE1 1RJ
 T: +44 (0)191 245 7100, F: +44 (0)191 240 7111, mail@redboxdesign.com, www.redboxdesign.com
 Red Box Design Group Ltd trading as Red Box Architecture
 redboxdesigngroup : redboxinteriors : redboxgallery

THE NATIONAL FOOTBALL CENTRE
 ST GEORGE'S PARK

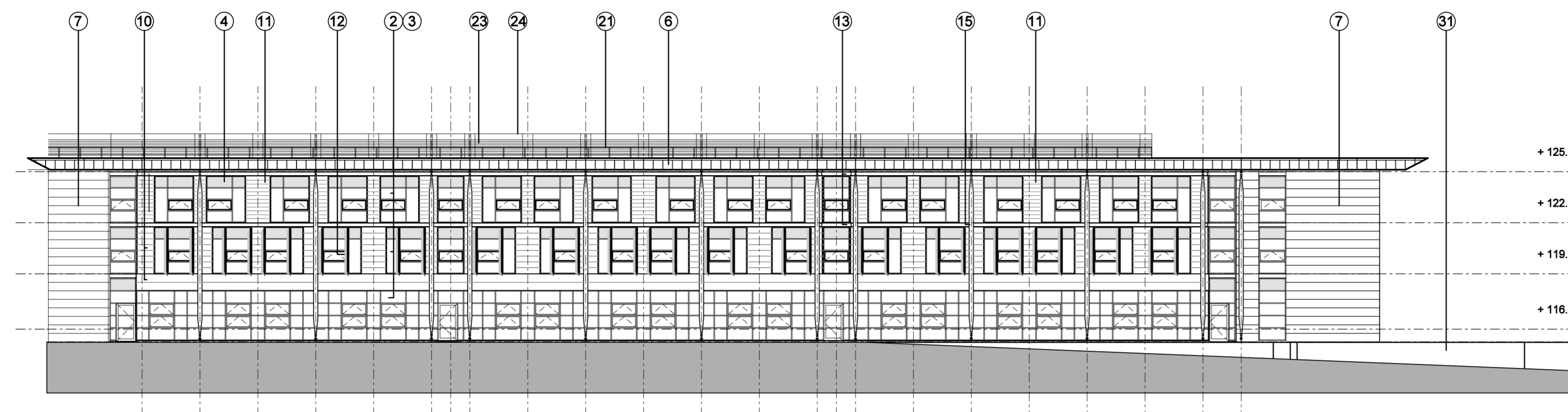
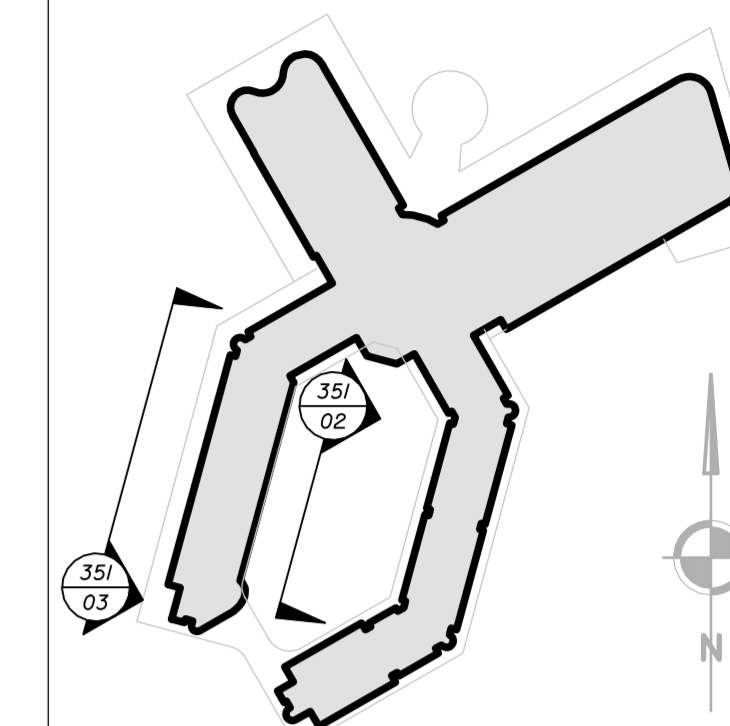
HOTEL BUILDING
 Proposed South West Elevations

1:200	09 003	354	B
A1	PLANNING		

copyright © Red Box Design Group Ltd 2010

Notes
 1. To be read with CDM Risk Register
 2. Do not scale, check this is the latest version, if in doubt, ask see drawing issue log for issue history

09003-355/03
 Hotel Elevation Location Plan
 Scale: NTS



09003-355/01
 HOTEL BUILDING: WEST ELEVATION: BEDROOM WING
 SCALE 1:200



09003-355/02
 HOTEL BUILDING: PROPOSED WEST ELEVATION TO BEDROOM WING FACING COURTYARD
 SCALE 1:200

MATERIALS LEGEND

- ① Pre patinated copper cladding
- ② PPC curtain walling
- ③ Sealed double glazed units
- ④ Sealed double glazed insulated spandrel panels
- ⑤ Bronze anodised aluminium louvre blades
- ⑥ Pre weathered brass cassette panels to soffits and fascias
- ⑦ Pre weathered brass strip cladding
- ⑧ Pre weathered brass plank cladding
- ⑨ Structural glazing (double glazed)
- ⑩ Stone cladding
- ⑪ Oak strip boarding cladding
- ⑫ Oak solar shading fins
- ⑬ ppc channel
- ⑭ Laminated glass balustrade
- ⑮ Galvan column with engineered steel head and base connection details
- ⑯ Stainless steel bracing to porte cochere
- ⑰ Bronze screen to plant louvres
- ⑱ Roller shutter doors
- ⑲ ppc steel doorset
- ⑳ Standing seam metal deck roofing
- ㉑ Handrail: ppc 12 x50 flats
- ㉒ Prepatinated copper rooflight surround
- ㉓ ppc louvres
- ㉔ ppc rainscreen cassette cladding
- ㉕ Kalfwall cladding panels in ppc support framework
- ㉖ Painted steel columns with engineered head and base details
- ㉗ Opaque double glazed units
- ㉘ Timber louvres
- ㉙ Terracotta opaque fabric roof covering
- ㉚ Gabion walling
- ㉛ Dressed stone walling

B	ISSUED FOR PLANNING	2010.02.12	MC	SG
A	Draft Issue For Comments	2009.01.29	MC	SG
-	First Issue	2009.12.22	DW	BF
Rev	Notes	Date	By	Review

redboxarchitecture

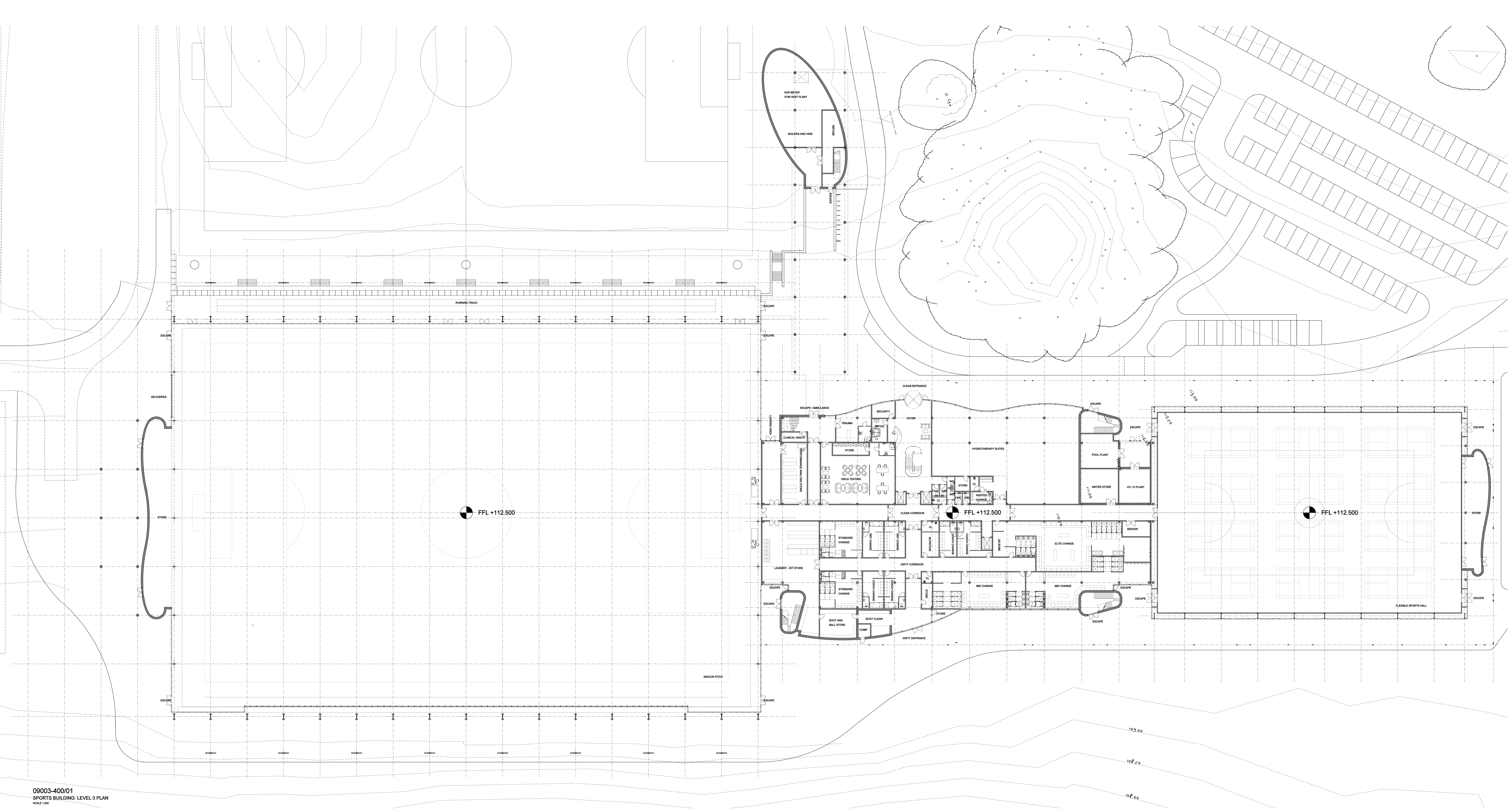
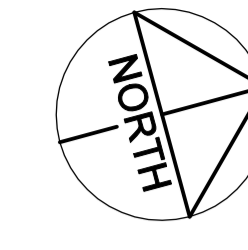
Red Box Architecture, St Nicholas Chare, Newcastle upon Tyne, NE1 1RJ
 T: +44 (0)191 245 7100, F: +44 (0)191 240 7111, mail@redboxdesign.com, www.redboxdesign.com
 Red Box Design Group Ltd trading as Red Box Architecture
 redboxdesigngroup : redboxinteriors : redboxgallery

THE NATIONAL FOOTBALL CENTRE
 ST GEORGE'S PARK

HOTEL BUILDING
 West Elevations

1:200	09 003	355	B
A1	PLANNING		

NOTE
 1. All public realm landscaping shown for indicative purposes only.
 2. All internal layouts shown for indicative purposes only.



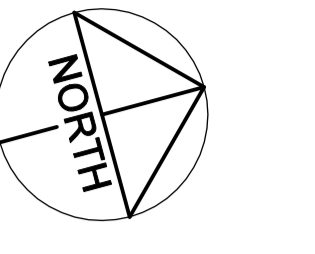
09003-400/01
 SPORTS BUILDING: LEVEL 0 PLAN
 SCALE 1:200

ISSUED FOR PLANNING	20/05/22	AB	AV
ISSUED FOR PERMITTING	20/05/22	AB	AV
ISSUED FOR CONSTRUCTION	20/05/22	AB	AV
ISSUED FOR AS-BUILT	20/05/22	AB	AV

redboxarchitecture

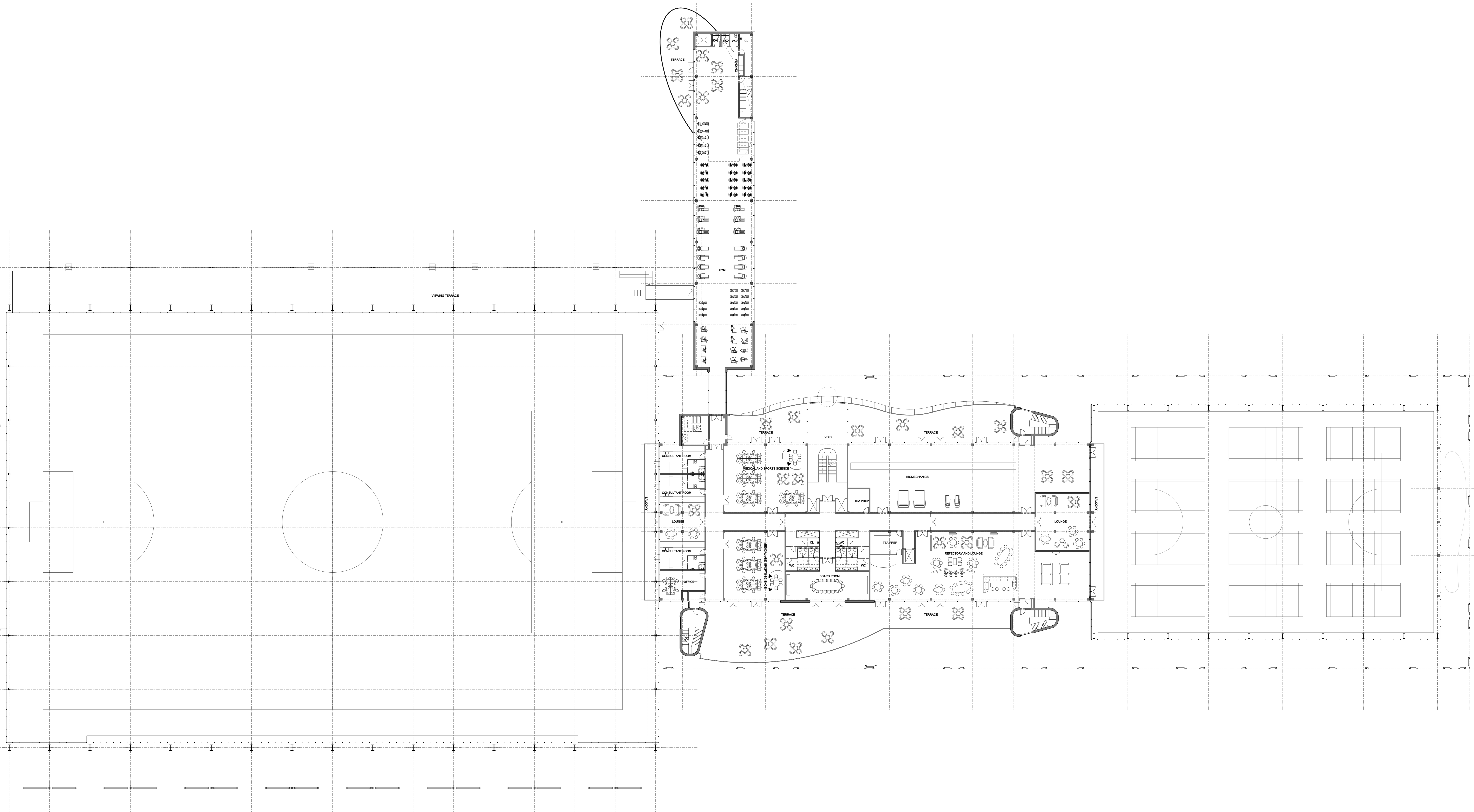
THE NATIONAL FOOTBALL CENTRE
 ST GEORGE'S PARK
 SPORTS BUILDING
 Level 0 GA Plan
 1:200
 PLANNING
 400

NOTES
1. Do not start work until DC is fully approved
2. Do not scale, check this is the correct version, if in doubt, ask your drawing issue log
3. For any queries, contact the architect



NOTE
1. All public manufacturing shown for indicative purposes only
2. All internal layouts shown for indicative purposes only.

09003-401/01
SPORTS BUILDING: LEVEL 1 PLAN
SCALE: 1:200



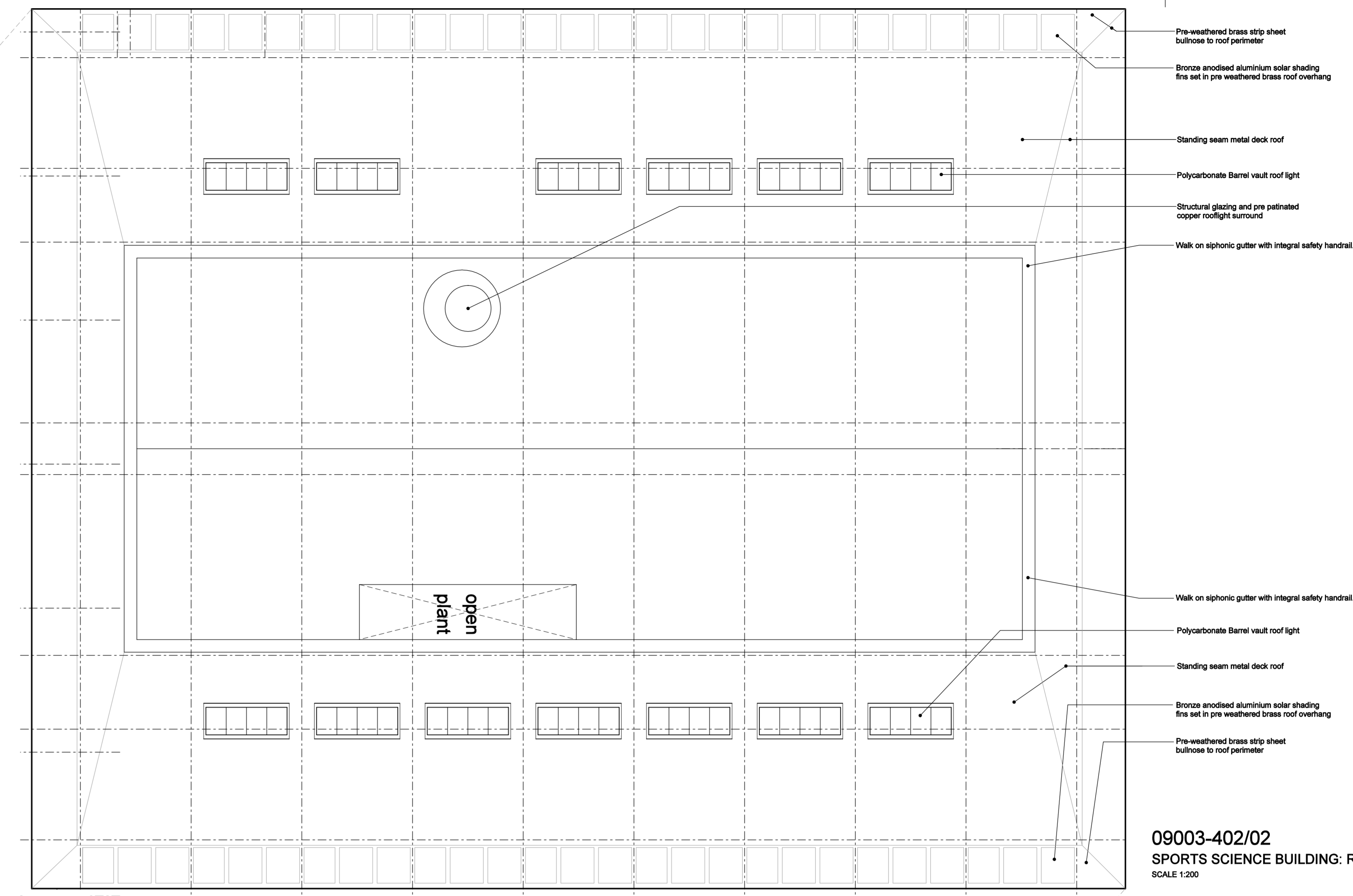
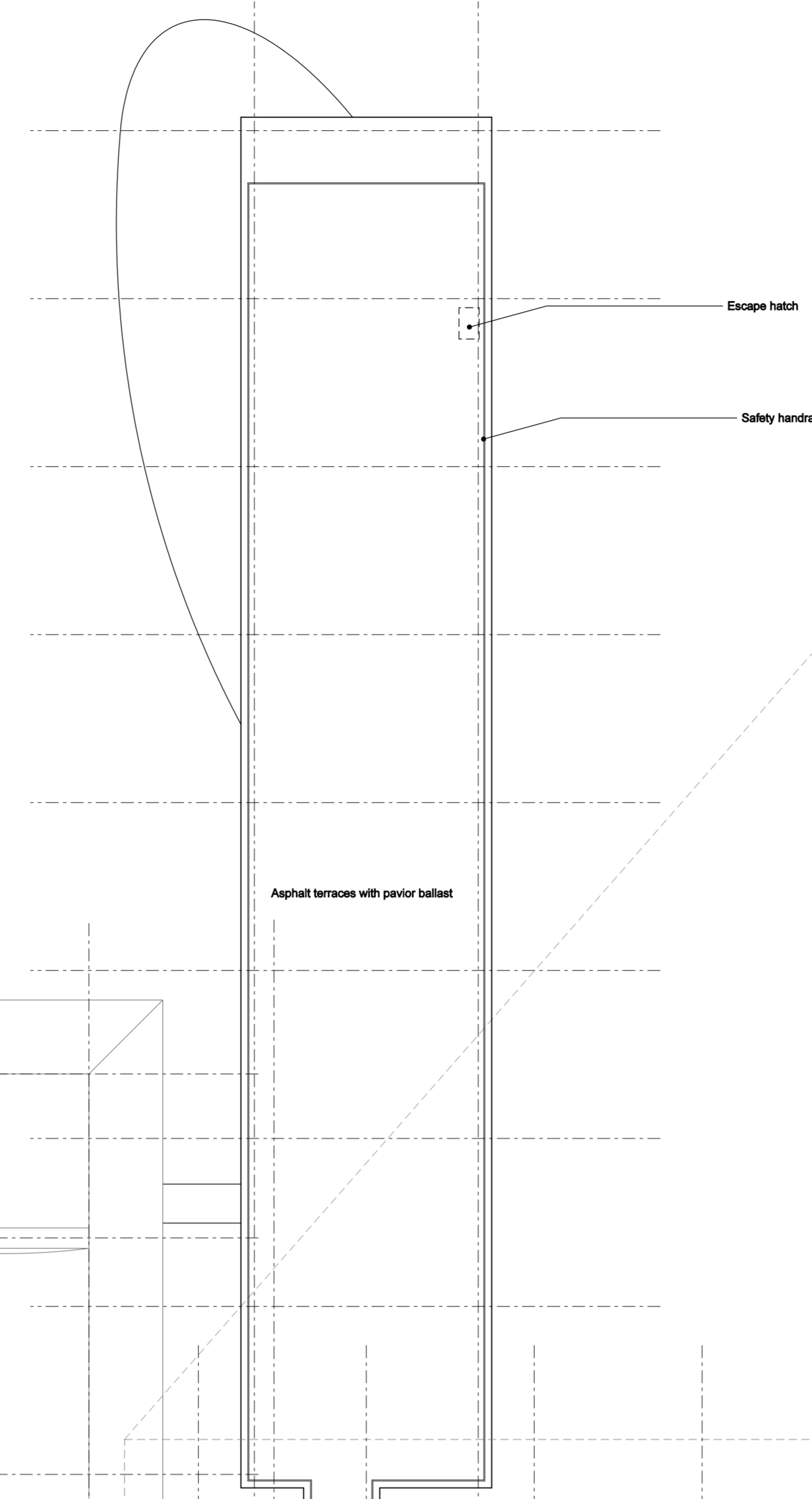
1	CONSULTANT FOR PLUMBING	20/10/2018	AN	100
2	GENERAL ARCHITECTURAL PLAN	20/10/2018	AN	100
3	GENERAL ARCHITECTURAL PLAN	20/10/2018	AN	100
4	GENERAL ARCHITECTURAL PLAN	20/10/2018	AN	100

redboxarchitecture
Red Box Architecture, 11 The Quadrant, Newcastle upon Tyne, NE1 7EQ
T: +44 (0)191 2521101, F: +44 (0)191 2521101, email: info@redboxarchitecture.com, www.redboxarchitecture.com
redboxarchitecture.com redboxarchitecture.com

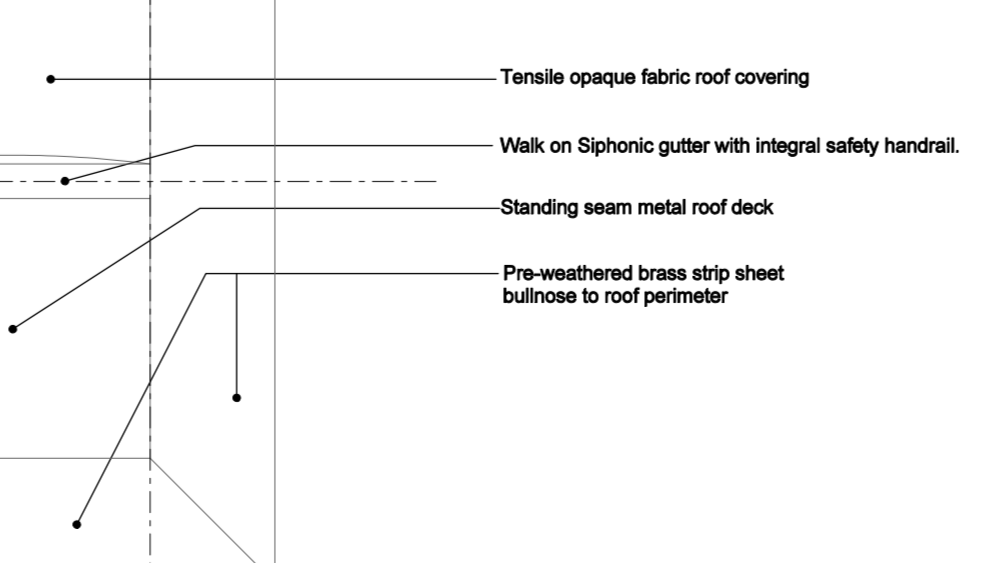
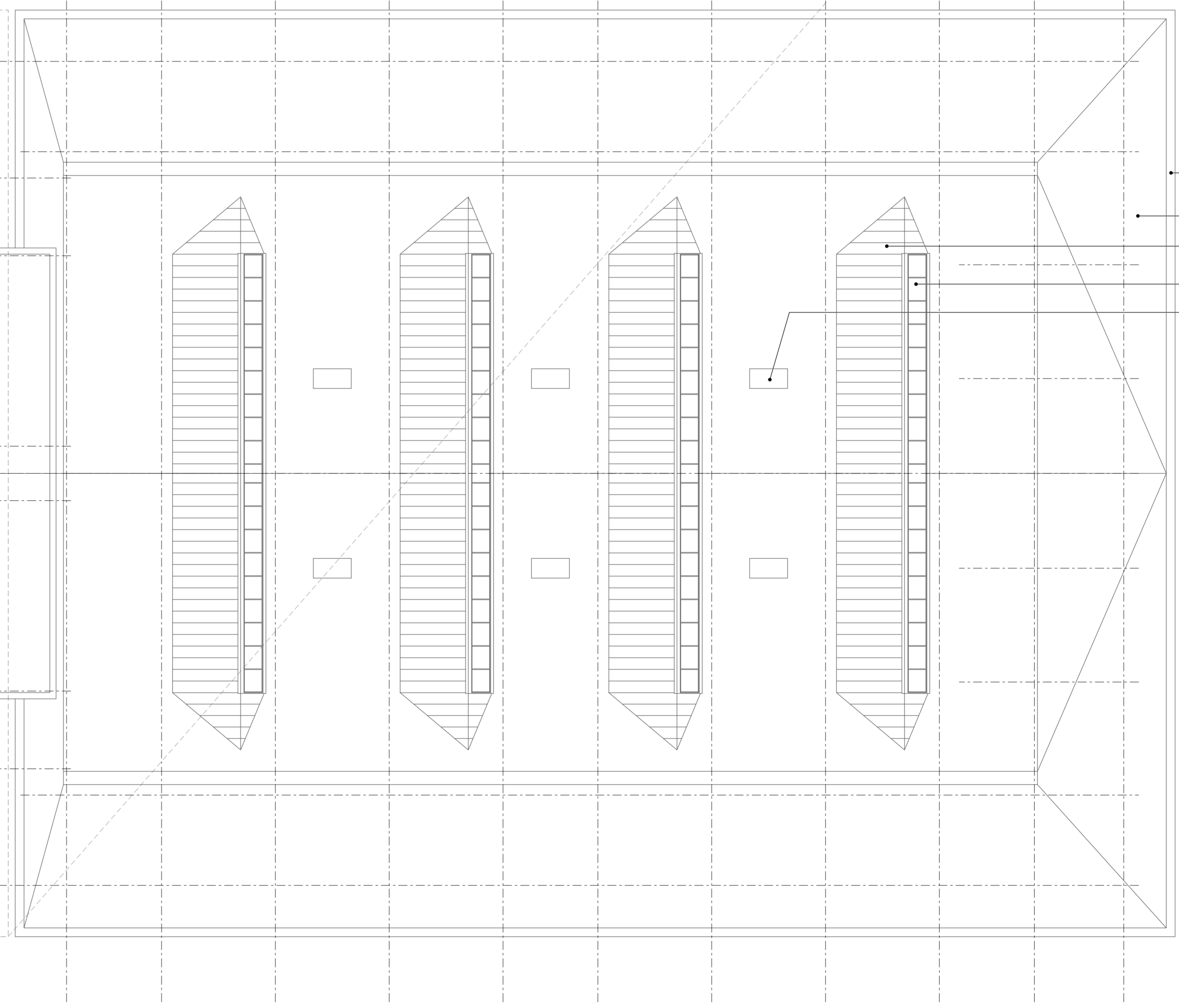
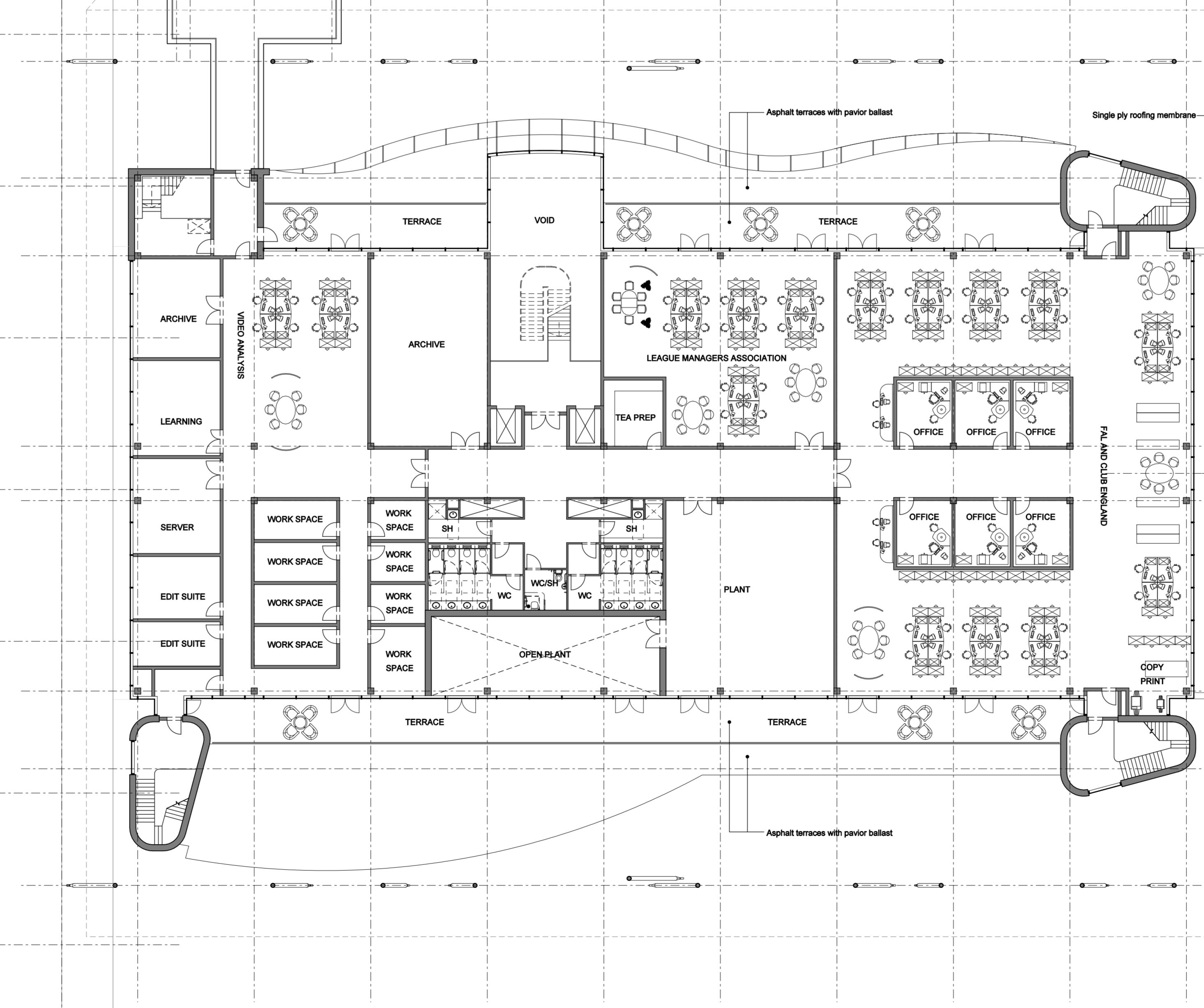
THE NATIONAL FOOTBALL CENTRE ST GEORGE'S PARK	
SPORTS BUILDING Level 1 GA Plan	
1:200	99 003
AD	PLANNING
401	C

Copyright © Red Box Design Group Ltd 2018

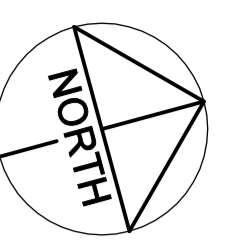
09003-402/01
SPORTS BUILDING: LEVEL 2 PLAN
SCALE 1:200



09003-402/02
SPORTS SCIENCE BUILDING: ROOF PLAN
SCALE 1:200



NOTE:
1. Do not work with COVID-19 positive
2. Do not scale, check this is the latest version, if in doubt, ask your drawing issue log for more info.



NOTE:
1. All public realm/handicapping shown for indicative purposes only.
2. All internal layouts shown for indicative purposes only.

REV	DATE	BY	CHKD	DESCRIPTION
1	2020/07/14	AL	AL	Issue for Planning
2	2020/07/14	AL	AL	General Review and minor amendments
3	2020/07/14	AL	AL	Final Review
4	2020/07/14	AL	AL	Final Issue

redboxarchitecture
Red Box Architecture, 11 Red Bank, Newcastle upon Tyne, NE1 7RU
t: +44 (0)191 261 0100 e: info@redboxarch.co.uk www.redboxarch.co.uk
redboxarchitecture | architecture | interior design